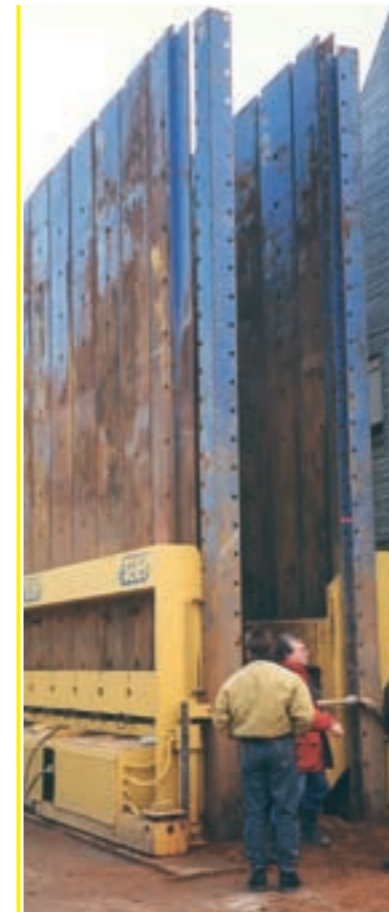
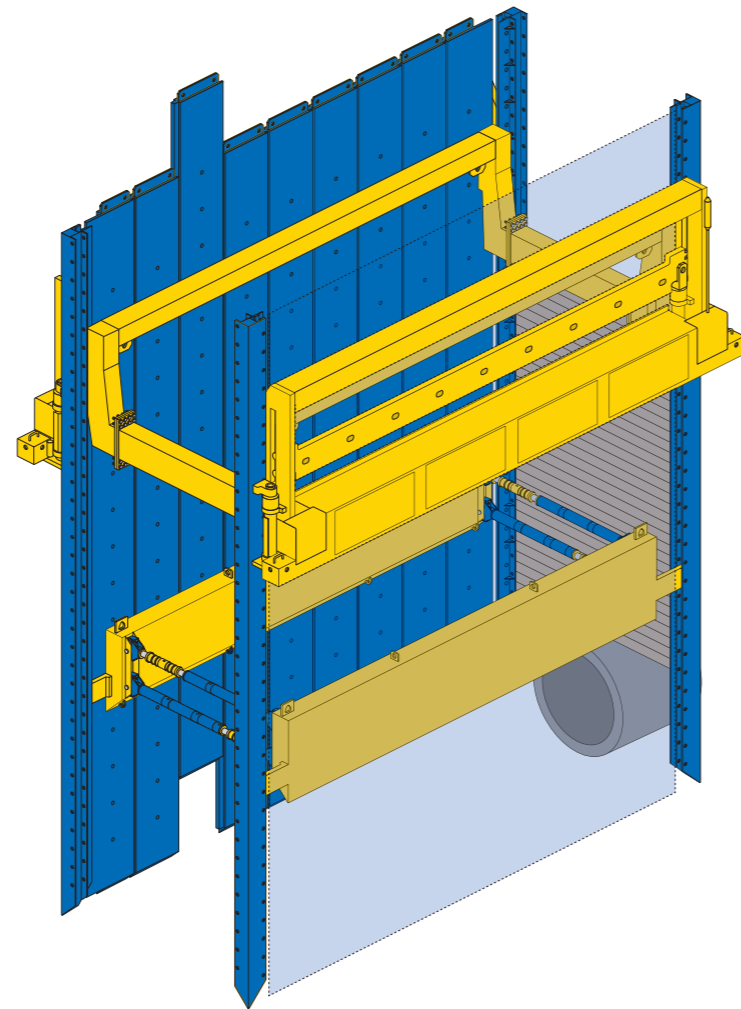


HYDRAULIC PRESSBOX

Series 800



Pressbox

Outer measurements			shoring length between trench ends L_v [m]	Number of box profiles total	UB thickness t_{OG} [m]	Permissible beam load q_{OG} [kN/m]	Machine weight w/o accessories [kg]
L [m]	H [m]	B [m]					
7.78	2.38	2.36	7.00	18	0.30	80	21 100

Machine lower beam

Outer measurements			Pipe clearance length in the lower beam L_c [m]	Number of lower beams total	Permissible beam load q_{OG} [kN/m]	Weight w/o accessories [kg]
L [m]	H [m]	t_{UG} [m]				
7.19	1.07	0.27	5.75	2	218	7700

Side slide rail

Outer measurements			Quantity total	Permissible bending moment $M_{Rtr.}$ [kNm]	Weight w/o accessories [kg/Stück]
L [m]	H [m]	$t_{Rtr.}$ [m]			
7.30	0.36	0.22	4	185	930
9.30	0.36	0.22	4	185	1180

Box profiles

Position	Outer measurements			Number of box profiles per side	Permissible bending moment $M_{Kpr.}$ [kNm/m]	Weight w/o accessories [kg/unit]
	L [m]	B [m]	$t_{Kpr.}$ [m]			
right – nut	7.30	0.79	0.10	1	384	1430
in the centre		0.79		7		1500
left – spring		0.82		1		1400
right – nut	9.30	0.79	0.10	1	384	1760
in the centre		0.79		7		1800
left – spring		0.82		1		1735

Support

Widths	between profiles b_c [m]	between the upper beams b_{OG} [m]	between the lower beams b_{UG} [m]	Length of distance piece [m]	Trenches outside [m]	Machine outside [m]
min.	1.52	0.92	0.98	0.46	1.73	2.84
max.	4.70	4.10	4.16	3.64	4.91	6.02