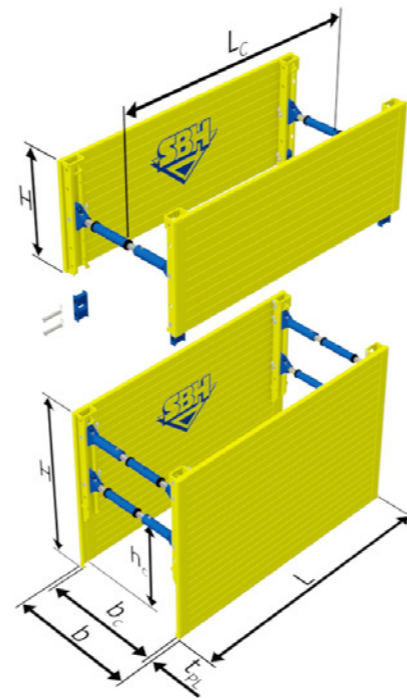


# LIGHT BOX 300 series

The SBH Light Box combines lightweight plates construction with an articulated spindle. This type of shoring is therefore ideal for small to medium-sized trenches and the use of light construction machinery.

- ▶ The Light Box can also be used in unstable soils
- ▶ Thanks to its articulated spindles, it can also be installed using the cut and lower method
- ▶ Ideal for supply lines and house connections
- ▶ Compared with the Lightweight Shoring system, a more robust side part construction enables higher pipe clearances, and the SBH spindles with extension pipes enable greater trench widths



## PLATES $t_{pl} = 60.00 \text{ mm}$

Plate length L [m]	Plate height H [m]	Pipe clearance length $L_c$ [m]	Pipe clearance height $h_c$ [m]	Permissible length pressure [kN/m <sup>2</sup> ]	Limit state design load $e_d$ / Characteristic system resistance $R_k$ [kN/m <sup>2</sup> ]	Weight per box [kg]
2.00	2.00	1.60	1.12	50.4	75.6	920.0
	2.40		1.27	38.5	57.8	1030.0
	2.60		1.27	38.2	57.3	1105.0
	1.40			50.4	75.6	640.0
2.50	2.00	2.10	1.12	32.7	49.1	1025.0
	2.40		1.27	30.8	46.2	1150.0
	2.60		1.27	30.6	45.9	1240.0
	1.40			32.7	49.1	720.0
3.00	2.00	2.60	1.12	31.8	47.7	1385.0
	2.40		1.27	26.0	39.0	1575.0
	2.60		1.27	25.8	38.7	1700.0
	1.40			31.8	47.7	960.0
3.50	2.00	3.10	1.12	22.7	34.1	1535.0
	2.40		1.27	22.3	33.5	1750.0
	2.60		1.27	22.1	33.2	1890.0
	1.40			22.7	34.1	1070.0

Other lengths or custom variants upon request.



## ACCESSORIES

You can find the accessory parts

- ▶ Spindle key
- ▶ Spindle adaptor
- ▶ Protection rail
- ▶ 4-fold chain with shortening system
- ▶ Box connectors
- ▶ Protective driving cap

for the Light Box 300 series on pages 88–91.